

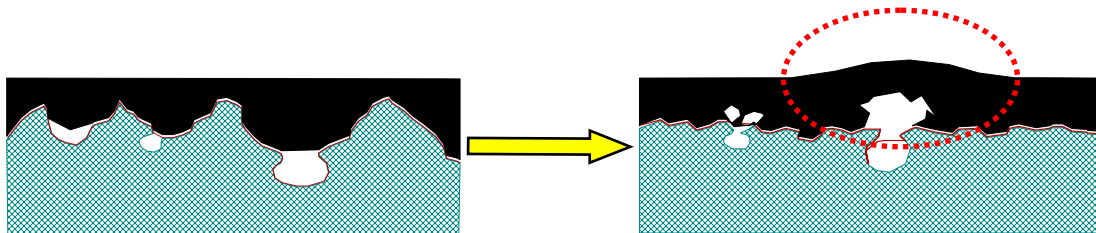
## FORDECK

(two components epoxy sealing coat for concrete deck)

### DESCRIPTION AND SCOPE OF APPLICATION

**FORDECK** is used as a sealing coat for concrete deck before the application of bituminous membrane like **PARAFOR PONTS** or **PARAFORIX**.

**FORDECK** has a perfect adhesion to concrete deck. Such adhesion allows to avoid the blistering phenomena (which could appear during warm periods).



*Blistering phenomena*

**FORDECK** needs to be sanded to ensure the cohesion of the bituminous membrane.

### PERFORMANCES

PROPERTIES	Units	Nominal values
Viscosity at 40°C (resin + hardener)	Cps	600
Dry extract	%	100
Cross-linkage time	Hours	24
Hardener flash point	°C	> 200
Epoxy density		1
Hardener density		1,33
Ratio resin/hardener (in volume)		1/1
Minimal temperature of application	°C	> 10
Polymerization time at 20°C	Day	7
Colour		Beige

### ISO 9001 REFERENCE DOCUMENT

. Our company has been awarded the ISO 9001 certificate for all its establishments in France.

. The present document is the ISO 9001 reference document.



## Characteristics of sand to be used

- Grading includes between 0.7mm and 1.2mm
- Kind : quartz
- Sand is not delivered with **FORDECK**

## PACKAGING

**FORDECK** is a sealing coat for concrete, without solvent, composed of 2 components: an epoxy resin (component A) and an amino hardener (component B).

Both components are delivered in separated cans: one of 20kg (component A, 20l) and one of 28kg (component B, 20l).

**Per pallet: 12 cans of component A + 12 cans of component B.**

## STORAGE

Should not be stocked more than 6 months.

Must be stocked in a dry room with a temperature < 15°C.

## APPLICATION

### **Preparation of the mixing**

Concrete deck must be at least one week old.

Appearance of the concrete must be in accordance with specifications of STER 81 (sand height = 1.5mm). **FORDECK** is a sealing coat, not a waterproofing product.

Bearing element must be dry and clean from any non adhesive product, otherwise it must be treated by gritting or shot-blasting.

### **Application of FORDECK**

Component A and component B are delivered in appropriate packaging. Before mixing, component B must be homogenized by using a mixer (speed around 400 revs).

Then, component A and component B are mixed by using a mixer (speed around 400 revs) until obtaining a homogenous mixing.

Then, **FORDECK** has to be applied during a delay of 20 minutes (for temperature around 15°C).

**FORDECK is applied in two coats.**

**First coat: 500 g/m<sup>2</sup> - drying time: 24h**

**Second coat: 350 g/m<sup>2</sup>.**

**Quantity of sand to apply: 3 kg/m<sup>2</sup>** (must be applied immediately after the second coat).

*Before applying the bituminous membrane, excess of sand will be brushed.*

**FORDECK** must not be applied when raining.

Rain can affect **FORDECK** during the 4<sup>th</sup> hours following the application. Product must be protected during this delay.

**FORDECK** must not be applied with temperatures lower than 8°C.

Temperature will affect the opening time of the product. During warm conditions, it is recommended to apply **FORDECK** during decreasing temperatures cycles.

#### **Application of the bituminous membrane**

Bituminous membrane is applied at least 24h after the application of the second layer of **FORDECK**.

Flame must be oriented on the membrane and not on **FORDECK**.