

# Fondafor®

Torchable elastomeric bitumen membrane for the exterior waterproofing of underground walls



- ▶ High resistance to cracking, to puncturing, to nail-tearing and root-penetration
- ▶ Long life due to the properties of the SBS elastomeric bitumen compound
- ▶ Traditional welding by propane-torching
- ▶ Single ply, easy to install

## Packaging

Roll 8m x 1m ▪ Roll weight: approx. 39kg

## Main uses

- Exterior waterproofing of underground walls of concrete or masonry, coated or not, of residential premises;
- Waterproofing of earth retaining walls, stairway ramp walls, consolidated plantings, etc.;
- Fondafor is used alone or with Fonda +/- Fonda GTX (protection and drainage boards), providing complementary protection and/or drainage.

## Identification

- Membrane thickness: 3.2mm;
- Membrane surfacing: slate chips (light-coloured schist);
- Underfacing: fusible film;
- Side overlap with scarified fusible protection;
- SBS elastomeric bitumen;
- Non-woven polyester reinforcement;
- Root-inhibiting additive.

## Performances

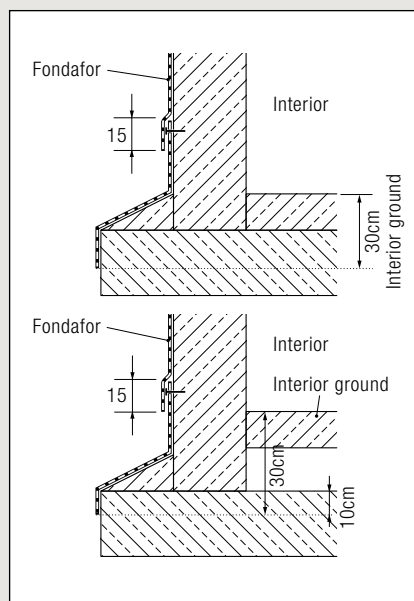
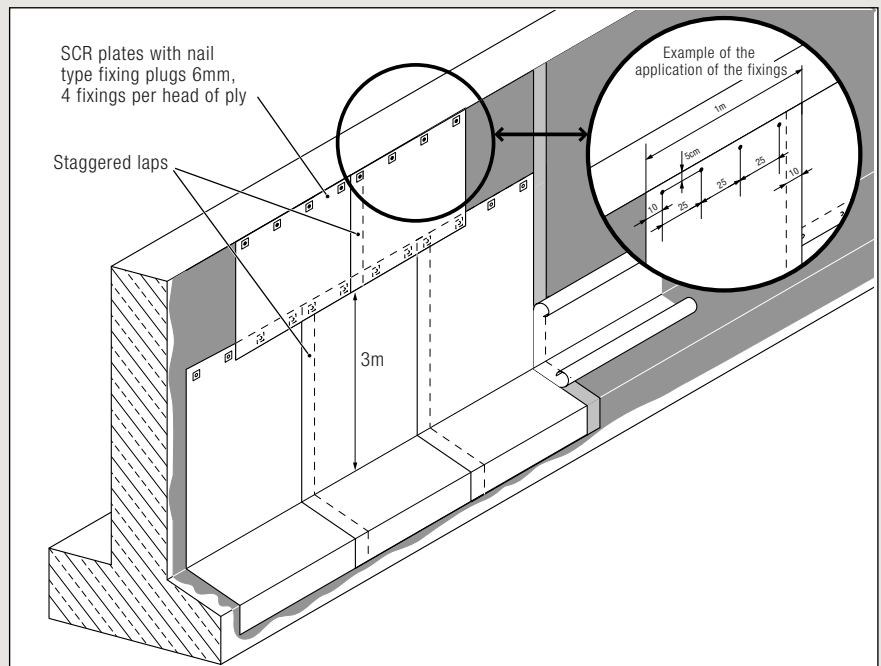
- Breaking strength: 10daN/cm;
- Elongation at break: 30%;
- Nail tearing resistance: 18daN;
- Resistance to puncturing under concentrated static load: 25kg;
- Resistance to puncturing under concentrated dynamic load: 20J.

## Preparation of substrates

- Eliminate excrescences and rough points, dress the holes, point the masonry work, straighten and dress sharp edges and angles;
- Flatness under the rule of 2m: tolerance 10mm;
- Using mortar, chamfer the connection of the walls with the foundation footing;
- Clean the wall to be waterproofed;
- Apply Siplast Primer to the surface.

## Application:

- Torch the membrane of a minimal length of 3m; This may be increased by the extension of the foundation footing;
- At the head of the membrane, fix the membrane with four mechanical fixings per linear meter;
- Apply the membrane to the foundation footing's rim over 0.10m at least or, under the level of the premises over 0.30m;
- Work from bottom to top;
- For heights greater than 3m, cover the mechanical fixings by the endlaps (15cm). The laps are staggered from each other;
- The maximal waterproofed height is limited to 15m.



## Top protection

- This is done by flashing with ridge or strip flashing according to the regulations (in compliance with professional rules in force) or by Parasolin termination bar.

## Vertical drainage

- If drainage is necessary (in compliance with professional rules in force), the water is deflected to the drain by the installation of one of the Fonda Protection systems (Fonda+ or Fonda GTX) up to 7.5m high above this, protection by stacking concrete blocks or extruded polyurethane panels.

## Backfill

- In case backfilling might provoke perforation, protect the Fondafor by one of the Fonda systems (Fonda+ or Fonda GTX). Refer to the guide for underground walls and to the Fonda Protection Technical Assessment 07/04-1369.

## Complementary information

- Fonda Technical Assessment
- Product guides: Siplast Primer and Parasolin

## Customs nomenclature:

- N° 68 07 10 19 00 00 P